

# Optica<sup>®</sup>

**Trusted**  
by Independent  
Optometrists  
**for Over 50 Years**

## Your One-Stop Shop for Optical Accessories

Grow your Practice with our complete range of custom-branded accessories, retail-ready products, and essential workshop tools & parts.



*"Their support is great and you can be confident in the end product."*

**Martin Deep, See Optometry, SA**



**Best  
Seller**

**Branded - p6-19**



**Retail - p20-27**



**New**

**Workshop - p28-35**

**opticaaccessories.com**



14

BESPOKE BRANDED Cases



8

LOGO LUXE  
Lens Cleaners

# Welcome from OPTICA®

Optica continues to be proud to support independent optometry practices across New Zealand and Australia. Over the years we've come to understand the needs of independent optometrists and have focused on providing reliable accessories that add value where it counts.

Whether it's providing custom branded accessories, retail accessories, tools & parts, or simply being responsive and easy to deal with, our focus is on making your day-to-day just a little bit easier. This catalogue is shaped by decades of listening to our customers and delivering practical solutions that add real value to your business.

*Tom Nichol*

Tom Nichol  
Managing Director

## Our Industry Partners



## Easy ways to order



**opticaaccessories.com**



**AU: 1800 199 860**  
**NZ: 0508 96 33 33**



**AU: service@optica.com.au**  
**NZ: service@optica.co.nz**



# Contents

Logo Luxe	6-9
Picture Perfect	10-13
Bespoke Branded	14-17
Branded Bags	18
Branded Extras	19
The Value of Retail	20
Retail Products	21-27
Workshop	28-35

**Trusted** by Independent  
Optometrists for  
**Over 50 Years**

## Lots of happy customers



*"Great service and great quality products. Would highly recommend."*

**Kinga Kozlowski**  
**Windsor Optometry, NSW**



*"Their support is great and you can be confident in the end product."*

**Martin Deep**  
**See Optometry, SA**

## Our Story

Founded in 1972, Optica has spent over 50 years designing, sourcing, and distributing quality eyewear accessories for the optical industry. From custom-branded cases to retail add-ons and workshop tools, we help practices across New Zealand, Australia, and beyond deliver a better patient experience.

## Our Values

These are our guiding principles

- G** **GLOBAL**  
We're driven by our desire to enhance people's lives globally
- E** **ETHICAL**  
Our social and environmental responsibility is a foundation of our decision making
- A** **AGILE**  
We're nimble, process & results-driven while always improving
- R** **RELATIONSHIPS**  
Our integrity is at the core of everything we do
- E** **ENERGETIC**  
Our vibe is friendly, fun and upbeat
- D** **DIVERSE**  
We embrace differences as opportunities and foster a culture of collaboration and innovation





# OPTICA®



## Why Choose Optica?

### Reliable Customer Support

Our team is friendly, knowledgeable, and ready to help whenever you need it.

### 2 Year Product Warranty

Because we believe in, and stand by our product range.

### Order Online Anytime

Place orders when it suits you on our easy-to-use website.

### Quick Turnaround

Custom-branded accessories delivered in as little as 3 weeks.

### Stock Ready to Go

Core dispensing ranges are kept in stock, so you're not left waiting.

### No Hidden Freight Costs

Freight charges for branded products discussed at time of order.

### All Your Accessories in One Place

Your one-stop shop for optical accessories.

### Ethical Sourcing Policy

Because we care where and how our products are manufactured.

### Sustainability

We are constantly looking for ways to reduce our impact on the environment.

## OUR PURPOSE

**Optica exists to enhance peoples lives by developing quality products with minimal impact on the planet.**





# The Value of Branded Accessories

**Branded Accessories are a powerful tool that enhance brand visibility and memorability, especially in a competitive marketplace.**

## Customisation That Elevates Your Brand

At Optica, we turn everyday accessories into powerful brand assets. By adding your logo or message to cases, cloths, or pouch, your brand stays front of mind in your customers' daily routine, building recognition and reinforcing trust.

## Premium Materials, Exceptional Finish

Our branded accessories are crafted with high-quality materials and advanced printing techniques, so they look great and last. From sleek, structured cases to high-performance cloths and reusable bags, every item reflects quality and consistency.

## Made Easy, Backed by Experience

With over 50 years supporting independent optometry, we know what works. Our streamlined process, clear communication, and local support team make custom ordering simple so you can focus on your patients, not your packaging.



# LOGO LUXE

Pictured: Cupcake  
Satin in purple

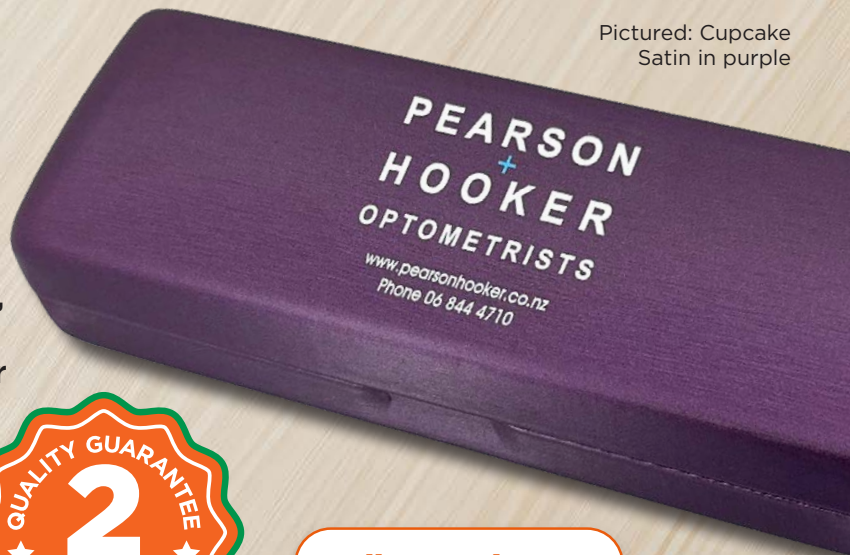
## Cases

Printed in-house with a fast turnaround, low minimums, and vibrant full-colour printing, our Logo Luxe range puts your mark on every case. Mix and match shapes and colours to suit your style.

- ✓ Full colour print
- ✓ Multiple shapes & colours
- ✓ Quick turnaround time
- ✓ 2-year warranty



Full range in our  
warehouse ready  
to print today



### Boston

- ✓ Soft touch with a subtle metallic finish
- ✓ Sleek, medium to large multi-purpose case

Colours

intl. dimensions (mm) 155 x 58 x 33

Code **OPM16PD**



### Barcelona

- ✓ Compact & stylish, suits most frames
- ✓ Soft-touch finish in multiple vibrant colour options

Colours

intl. dimensions (mm) 152 x 50 x 35

Code **OPM18PD**



### Cupcake

- ✓ Bold, glossy Cupcake case in bright colours
- ✓ Vibrant, sturdy case with matching interiors

Colours

intl. dimensions (mm) 145 x 45 x 36

Code **OPM29PD**



### Lola

- ✓ Bright, stylish case fits various frame sizes
- ✓ Magnetic closure for easy, secure access

Colours

intl. dimensions (mm) 150 x 56 x 29

Code **OPH35**





Made from  
recycled  
material



## Classic rPET

- ✓ Sturdy case with sleek black interior
- ✓ New eco-friendly rPET fabric

Colours      

intl. dimensions (mm) 150 x 55 x 30

Code **OPM285PD**



## Cupcake Satin

- ✓ Our most popular, versatile eyewear case shape
- ✓ Sleek satin finish in 5 top colours

Colours     

intl. dimensions (mm) 145 x 45 x 36

Code **OPM30PD**



Best  
Seller



## Magnum

- ✓ Wider, deeper case for turned-down temples
- ✓ Lipped finger hold for effortless opening

Colours     

intl. dimensions (mm) 150 x 60 x 35

Code **OPM66PD**



## Jazz

- ✓ Tapered case with contrasting interiors
- ✓ Spacious design fits various frame types

Colours      

intl. dimensions (mm) 147 x 53 x 35

Code **OPM46PD**

## LOGO LUXE Range



### Cases

Choose from 8 case types

- ✓ 10 per colour/shape
- ✓ MOQ: 100



### Lens Cleaning Spray

Choose from 2 bottle sizes

- ✓ 5 cap colour options
- ✓ MOQ: 200



### Microfibre Cloth

Choose from 2 cloth sizes

- ✓ 9 colour options
- ✓ MOQ: 500



# LOGO LUXE Lens Cleaners

Complete the look with custom-printed lens cleaning spray bottles. Designed to match your cases, they feature vibrant full colour printing, low minimums and fast turnaround.

## Our EV3+ formula is:

- ✓ Safe for all lens types including AR coated
- ✓ Alcohol and ammonia-free
- ✓ Anti-static and anti-fog protection



**42ml**

- ✓ Unique bottles with multicolour printing
- ✓ Various cap colours to match your brand

Lead time: approx. 3 weeks.

Colours

Code **PER42**



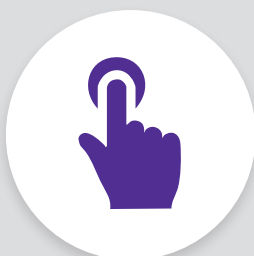
**200ml**

- ✓ 200ml lens cleaner with bold, on-brand printing
- ✓ Pair with cloth for a cohesive, lasting impression

Lead time: approx. 3 weeks.

Code **PER200**

## How it works



**You Decide**

Choose your  
products



**We Design**

Designed inhouse  
for **FREE**



**We Develop**

We make  
your products



**We Delight**

We deliver quality  
products to your door

# LOGO LUXE

## Microfibre Cloth

Add a finishing touch with custom-printed microfibre cloths. Choose from a range of vibrant colours and have your logo printed in a single colour using high-grade, non-scratch ink. The low-stretch fabric delivers a superior clean and a consistent brand experience.



*"Partnering with Optica reinforces our professionalism and enhances our brand image, allowing us to provide the best experience for our customers."*

**Karen - Cassidy Eyecare**

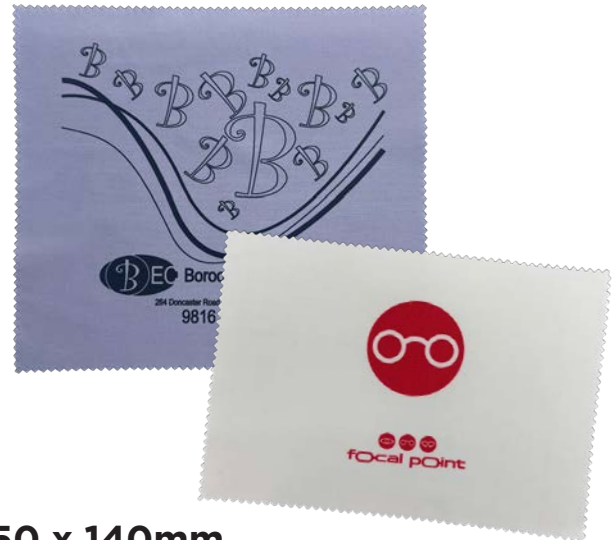


**140 x 100mm**

Lead time: approx. 3 weeks.

Colours

Code **10MP**



**150 x 140mm**

Lead time: approx. 3 weeks.

Colours

Code **15MP**

## Want to learn more?

**Book a 15-minute Discovery call.**  
We'll help tailor the right solution for your practice.



AU: **1800 199 860**  
NZ: **0508 96 33 33**



AU: **service@optica.com.au**  
NZ: **service@optica.co.nz**



**opticaaccessories.com**

# PICTURE PERFECT

Pictured: Cupcake

## Cases

Send us a photo that reflects your local area or connects with your patients, and we'll turn it into a premium printed case. Choose a full wrap or top-panel design, then customise the interior with colour and messaging. A completely unique case that helps your practice stand out and stay memorable.



**Full range in our warehouse ready to print today**

Turn your own photo into a high-impact case design  
Full wrap or top-panel digital print options

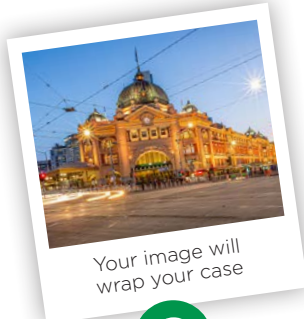
**Choose your case shape**



See page 11 for case shapes

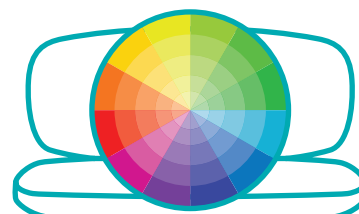
**1**

**Send your image**



**2**

**Choose your interior colour**



**3**

**Add internal messaging**



**4**

**Your unique case!**

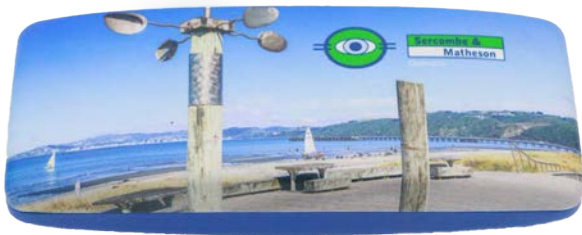


We design your perfect case for **FREE**



**5**





## Classic

- ✓ Modern slimline compact case
  - ✓ Easily accommodates extended temples
- intl. dimensions (mm) 150mm x 55mm x 30mm  
Code **OPM285D**



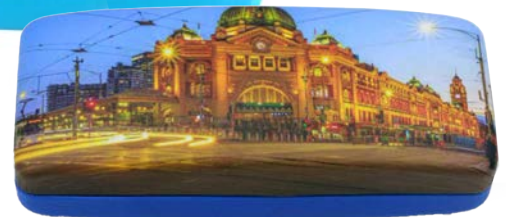
## Fitz

- ✓ Classic compact case with a curved silhouette
  - ✓ A reliable fit for both metal and plastic frame styles
- intl. dimensions (mm) 147 x 53 x 35  
Code **OPM56D**



## Cupcake

- ✓ Our most popular rectangular case with a clean, modern profile
  - ✓ Versatile fit for both plastic and metal frames
- intl. dimensions (mm) 145 x 45 x 36  
Code **OPM29D**



## Sentra

- ✓ Deep, spacious design tailored for larger plastic frames
  - ✓ Easily accommodates extended temples and wider set arms
- intl. dimensions (mm) 147 x 53 x 35  
Code **OPM283D**

## PICTURE PERFECT Range



### Cases

- Choose from 8 case types
- ✓ 500 per colour/shape
  - ✓ MOQ: 1000



### Lens Cleaning Spray

- Choose from 2 bottle sizes
- ✓ 2 cap colour options
  - ✓ MOQ: 1000



### Microfibre Cloth

- Choose from 3 cloth sizes
- ✓ Singles or double sided print
  - ✓ MOQ: 1000

# PICTURE PERFECT Lens Cleaning

Complete the experience with custom-printed lens cleaner bottles featuring the same iconic image used in your design. Available in 30ml and 60ml sizes, these bottles turn a practical accessory into a powerful brand touchpoint that reflects your local story and leaves a lasting impression.

## Our EV3+ formula is:

- ✓ Safe for all lens types including AR coated
- ✓ Alcohol and ammonia-free
- ✓ Anti-static and anti-fog protection



## Add Your Image

- ✓ Available in 30ml and 60ml sizes
- ✓ Printed with your custom image in vibrant full colour
- ✓ Refillable in-store to encourage repeat visits
- ✓ Practical, everyday accessory your patients will keep
- ✓ A memorable brand touchpoint that reinforces your story



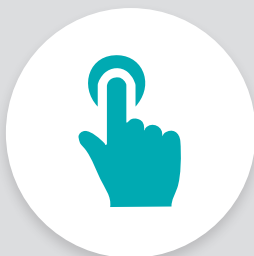
### 30ml & 60ml

- ✓ Unique bottles with multicolour printing
- ✓ Pair with cloth for a lasting impression
- ✓ MOQ: 1000

30ml - Code **PER30**

60ml - Code **PER60**

## How it works



### You Decide

Choose your products



### We Design

Designed inhouse for **FREE**



### We Develop

We make your products



### We Delight

We deliver quality products to your door

# PICTURE PERFECT Microfibre Cloth

Custom microfibre cloths printed in vibrant full colour using high grade digital print technology. Made from premium low stretch microfibre, with recycled options available, these cloths deliver a superior clean while showcasing your image in stunning detail. A practical keepsake that strengthens your brand and supports sustainability.

Price breaks available on bulk quantities.



## 150 x 140mm

- ✓ High-grade, low-stretch microfibre
- ✓ Eco-friendly option available
- ✓ MOQ: 1000

Lead time approx. 4 weeks.

Zig-zag edge & square corners  
Code **DSC-210**

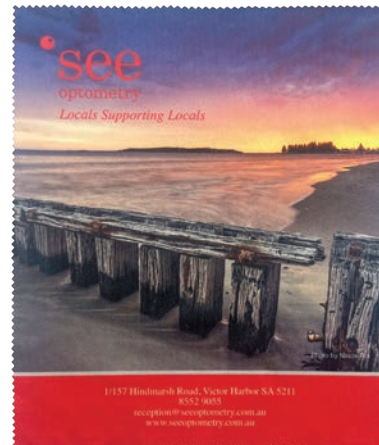
Straight edge & rounded corners  
Code **DSC-211**

AVAILABLE  
IN STRAIGHT  
OR ZIG-ZAG  
EDGES



*"Great service & great quality products. Would highly recommend."*

**Kinga Kozlowski**  
**Windsor Optometry, NSW**



## 190 x 160mm

- ✓ High-grade, low-stretch microfibre
- ✓ Eco-friendly option available
- ✓ MOQ: 1000

Lead time approx. 4 weeks.

Zig-zag edge & square corners  
Code **DSC-230**

Straight edge & rounded corners  
Code **DSC-237**

AVAILABLE  
IN STRAIGHT  
OR ZIG-ZAG  
EDGES

## Want to learn more?

**Book a 15-minute Discovery call.**  
We'll help tailor the right solution  
for your practice.



AU: **1800 199 860**  
NZ: **0508 96 33 33**



AU: **service@optica.com.au**  
NZ: **service@optica.co.nz**



**opticaaccessories.com**



# BESPOKE BRANDED

## Cases

Create a case that's completely your own. From shape and material to colour, lining and messaging, every element is customised to reflect your brand and keep your identity front of mind, even after patients leave the practice.



Pictured: Cupcake

## Perfectly Align Every Detail to Your Brand

Choose your  
case shape



See page 15 for  
case shapes

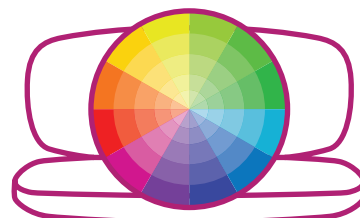
1

Choose your  
case colour



2

Choose your  
interior colour



3

Add your logo  
& design



4

Add internal  
messaging



5

Your unique case!



6

We design  
your perfect  
case for  
**FREE**



## Fitz

- ✓ Classic compact case with a curved silhouette
- ✓ A reliable fit for both metal and plastic frame styles

intl. dimensions (mm) 152 x 50 x 35

Code **OPM58E**



## Jazz

- ✓ Traditional compact flat case
- ✓ Compact yet roomy enough for most frame types

intl. dimensions (mm) 150mm x 55mm x 30mm

Code **OPM46E**



## Sentra

- ✓ Deep, spacious design tailored for larger plastic frames
- ✓ Easily accommodates extended temples and wider set arms

intl. dimensions (mm) 155 x 60 x 30

Code **OPM283E**



## Magnum

- ✓ Traditional larger shape with generous internal depth
- ✓ Ideal for extended temples, deeper frames, and wider resting gaps

intl. dimensions (mm) 150 x 60 x 35

Code **OPM66E**



## Cupcake

- ✓ Our most popular rectangular case with a clean, modern profile
- ✓ Versatile fit for both plastic and metal frames

intl. dimensions (mm) 145 x 45 x 36

Code **OPM29E**



## Triangle

- ✓ Sleek, fold-flat design that saves space when not in use
- ✓ Compact yet roomy enough for most frame types

intl. dimensions (mm) 154 x 55 x 48

Code **OPM7056E**

# BESPOKE BRANDED Range



## Cases

Choose from 6 case shapes

- ✓ 500 per case design
- ✓ MOQ: 1000 case style



## Lens Cleaning Spray

Choose from 2 bottle sizes

- ✓ Create your unique look
- ✓ MOQ: 1000



## Microfibre Cloth

Choose from 2 cloth sizes

- ✓ Full colour digital print
- ✓ MOQ: 1000

# BESPOKE BRANDED Lens Cleaning

Add a premium finishing touch with our bespoke branded lens cleaners. Customised to reflect your brand's colours, style and tone, it's a sleek, high-end accessory that leaves a lasting impression and elevates the patient experience.

## Our EV3+ formula is:

- ✓ Safe for all lens types including AR coated
- ✓ Alcohol and ammonia-free
- ✓ Anti-static and anti-fog protection



## 18ml

- ✓ Sleek aluminium bottle.
- ✓ Ideal for branding.

Code **PER18-07**

## 30ml Frosted

- ✓ Unique bottles with multicolour printing
- ✓ Choose from five colour options.
- ✓ MOQ: 1000.

## Colours



Code **PER30**



## Make it a Kit



Code **KIT18P-01**

# How it works



## You Decide

Choose your products



## We Design

Designed inhouse for **FREE**



## We Develop

We make your products



## We Delight

We deliver quality products to your door



# BESPOKE BRANDED Microfibre Cloth

Premium microfibre cloths, made to match your brand and built to last. Available in two sizes, they're soft, durable, and designed to keep your name in sight long after the visit. Lead time approx. 4 weeks plus shipping

Price breaks available on bulk quantities.



**150 x 140mm**

- ✓ High-grade, low-stretch, microfibre lens cleaning cloth
- ✓ Eco-friendly option available

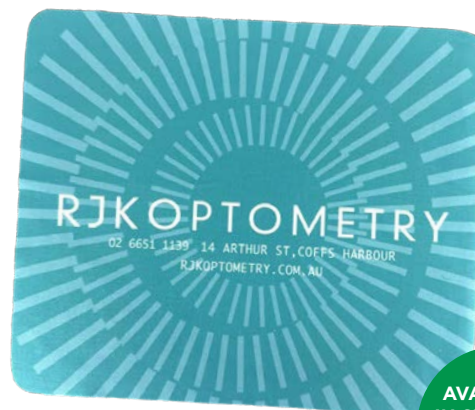
Lead time approx. 4 weeks.

Zig-zag edge & square corners  
Code **DSC-210**

Straight edge & rounded corners  
Code **DSC-211**



AVAILABLE  
IN STRAIGHT  
OR ZIG-ZAG  
EDGES



AVAILABLE  
IN STRAIGHT  
OR ZIG-ZAG  
EDGES

**190 x 160mm**

- ✓ High-grade, low-stretch, microfibre lens cleaning cloth
- ✓ Eco-friendly option available

Lead time approx. 4 weeks.

Zig-zag edge & square corners  
Code **DSC-230**

Straight edge & rounded corners  
Code **DSC-237**

## Want to learn more?

**Book a 15-minute Discovery call.**  
We'll help tailor the right solution  
for your practice.



AU: **1800 199 860**  
NZ: **0508 96 33 33**



AU: **service@optica.com.au**  
NZ: **service@optica.co.nz**



**opticaaccessories.com**

# Branded Retail Bags

Custom paper and non-woven bags that carry more than just glasses. Branded to suit your style, they're practical, professional and make sure your practice leaves with every patient. Lead time approx 6 weeks plus shipping.



## Non-woven Cloth Retail Bag

Custom printed non-woven cloth bags are a great way to promote your brand. Durable, eco-friendly, and reusable, they suit all kinds of products. Choose single or multi-colour print, with one bag and gusset colour. 240 x 240 x 100mm  
Code **NWBAG01**



## Paper Retail Bag

Custom printed paper bags are a fantastic way to send your brand out the door with each and every customer. Slim rope handles and square shape bag are suitable for all manner of products.

Code **PBAG01** 240 x 180 x 100mm

Code **PBAG02** 190 x 270 x 100mm



# Branded Lens Cleaning Wipes

Promote your brand with eco-friendly, alcohol-free lens wipes made for the AUS/NZ climate. Superior clean. ~12-week lead time.

## 30pc Pack

Code **TISS30P-F2** Alcohol Free

Code **TISS30P-A1** Alcohol Based

## 60pc Pack

Code **TISS60P-F2** Alcohol Free

Code **TISS60P-A1** Alcohol Based





## Branded Contact Lens Pouches

Protect your contact lenses with these high-quality pouches made from woven canvas material. Single or multicolour printing available to further enhance your brand. Available with a clear slip in the back for your business card or care information.

160 x 100 x 50mm

Code **OPC28**



To find out more talk to your account manager, scan the code or visit **opticaaccessories.com**



## Branded Peeps

peeps®  
BY CARBONKLEAN

Promote your brand with Peeps—a compact, high-performance lens cleaner from the makers of the world-famous LensPen, trusted by NASA. Its advanced carbon tech removes fingerprints and oils easily, lasting up to 500 cleans. Available in various colours, it's a standout promo item. Lead time: approx. 12 weeks.



Colours ● ● ● ● ● ● ●

Code **PEEPS200**

## Branded Microfibre Bag

Lightweight microfibre pouch protects glasses from scratches and knocks. Made from 250gsm cloth, fully brandable with your design. Ideal as a retail item or gift. Features double drawstring closure.

180 x 85mm

Code **OSG20-P**





# The Value of Retail

Our retail-ready accessories enhance the customer experience, keep eyewear protected, and create valuable upselling opportunities. Our comprehensive retail range makes it easy for you to boost revenue while meeting your customers' everyday needs.

## Accessories

From cords and chains to display stands — functional and fashionable add-ons.



## Lens Cleaning

Essential products for clear vision — including cloths, sprays and kits.



## Eyewear

Reading glasses, sunwear, and blue light options for everyday needs.



peeps®  
BY CARBONKLEAN

## Reusable Lens Cleaner for Smudge-Free Vision

The reusable lens cleaner that goes wherever you do. Peeps uses advanced carbon microfibre pads and a soft retractable brush to gently and effectively remove fingerprints, oils and dust.

- ✓ Safe for all lens types
- ✓ Removes smudges and fingerprints fast
- ✓ Compact & portable with protective case
- ✓ Up to 500 uses before pad replacement

A

### PEEPS12

Peeps Carbon Lens Cleaner (12pc)  
EAN 9419844111079

B

### PEEPS-1-CP

Peeps Replacement Carbon Lens Pads - 2 sets  
EAN 9419844111079



Gently clamps the lense for a thorough clean

overspex™  
OVER-THE-TOP™ SUNGLASSES

## Fit-Over Sunglasses for Prescription Glasses

Sunglasses designed to wear comfortably over prescription glasses — lightweight, polarised and protective for everyday and outdoor use.

- ✓ 4 unisex frame sizes for a perfect fit
- ✓ Premium TAC polarised, scratch-resistant lenses
- ✓ 100% UV protection + wraparound coverage
- ✓ Supplied with case, cloth and cord



**GRANDE**  
Large - 135mm Wide



**QUADRO**  
Medium - 135mm Wide



**MEZZO**  
Medium - 130mm Wide



**LUCIDO**  
Small - 130mm Wide





# Fashion Case Range

Explore the full fashion case range with interactive 360° views on our website. **2-Year Warranty on all cases.**

RRP:  
**\$12.49**

## Triangle Case II

OPM7056-01

**Internal Dimensions:**

L 153mm x W 49mm x H 49mm

Subject to stock availability



Folds down flat!

## Victoria

OPM575-01

**Internal Dimensions:**

L 155mm x W 58mm x H 33mm

Subject to stock availability



RRP:  
**\$12.49**

RRP:  
**\$12.49**

## Graphite Case

OSG19

**Internal Dimensions:**

L 147mm x W 55mm x H 29mm

Subject to stock availability



RRP:  
**\$19.99**

## Chloe

OSG25

**Internal Dimensions:**

L 147mm x W 53mm x H 35mm

Colours:   

Subject to stock availability



RRP:  
**\$12.49**

## 3/4 Pocket Clip

OPH50-01

**Internal Dimensions:**

L 147mm x W 53mm x H 35mm

Subject to stock availability



RRP:  
**\$9.99**

## Standard Pocket Clip

OPS19

**Internal Dimensions:**

L 145mm x W 60mm x H 35mm

Subject to stock availability



RRP:  
**\$18.99**

## Round Double Case

ODR30

**Internal Dimensions:**

L 150mm x W 56mm x H 22mm

Colours:  



RRP:  
**\$18.99**

## Flipside Double Case

ODF30

**Internal Dimensions:**

L 147mm x W 53mm x H 33mm

Colours:  



RRP:  
**\$59.99**

## Mantra Italian Leather Case

ODS1614

**Internal Dimensions:** L 172mm x W 78mm x H 49mm



RRP:  
**\$59.99**

## Valour Italian Leather Case

ODS5514

**Internal Dimensions:** L 177mm x W 68.5mm x H 37mm



RRP:  
**\$12.49**

## Kids Cases (Assorted)

OPC05

**Internal Dimensions:**

L 147mm x W 50mm x H 36mm

Subject to stock availability, see website for current range





# Optica Branded Retail Range



TISS30

RRP:  
**\$8.99**

TISS60

RRP:  
**\$12.99**

## Lens Cleaning Tissues

Varies. Alcohol-free single-use lens cleaning tissues

30 Tissue Box. Code **TISS30**

60 Tissue Box. Code **TISS60**

RRP:  
**\$9.99**

## 42ml Lens Cleaners

Box QTY 15 units of 42ml Lens cleaning solution

Code **SOL42-BOX**

RRP:  
**\$14.99**

## 200ml Lens Cleaners

Box QTY 8 units of 200ml Lens cleaning solution

Code **SOL200-BOX**

RRP:  
**\$24.99**

## 500ml Solution Refill

Code **SOL500**

RRP:  
**\$38.99**

## Lens Cleaner Promo Pack

1 x 42ml solution, 1 x 200ml solution,  
1 x funnel, 1 x 300x220mm cloth,  
6 x lens cleaning tissues

Code **SOLP3**

RRP:  
**\$21.99**

## 42ml Lens Care Kit

1 x 42ml lens cleaning solution,  
1 x cleaning cloth

Code **POU42-70S**

Also available with screwdriver included.

Code **POU42P-70S**



## Bulk Solution Refill

Varies.

Code **SOL10**

RRP:  
**\$39.99**RRP:  
**\$8.99**

## Microfibre Cloth In Wallet

Varies. Box QTY 20 units, available in assortments of:

Mixed. Code **MIC03-BOXMIXED**

Mixed. Code **MIC03-BOXKIWIANA**

RRP:  
**\$25.99**

## Jumbo Microfibre Cloth

400x400mm cloths in black, navy or various printed patterns. Supplied in PVC pouch.

Code **MIC10**

# Magnifiers

Our range of magnifiers have a wide variety of uses for your customers that are interested in crafts, puzzles, miniature painting, electronics and anything else requiring magnified vision. We offer an extensive selection of magnifiers. Please feel free to reach out to us for access to our complete range.



RRP:  
**\$29.99**

## Mini Metro Media

1.8x Magnification  
Requires 3x AA batteries.  
Code **MAGMD**



RRP:  
**\$69.99**

## Mini Metro Ergo

2x Magnification  
Requires 2x AAA batteries.  
Code **MAGEG**



RRP:  
**\$29.99**

## Clip On Magnifier

Available in +1.00, +1.50, +2.00, +2.50, +3.00 and +4.00 powers  
Code **MAGCL**



RRP:  
**\$36.99**

## OPTICA Magnifier x3 - Slider

3x Magnification plus automatic LED light.  
Code **MAGSL**



RRP:  
**\$32.99**

## OPTICA Magnifier x3 - Peanut

3x Magnification plus automatic LED light.  
Code **MAGPN**



RRP:  
**\$34.99**

## OPTICA Magnifier x3 - Explorer

3x Magnification plus automatic LED light.  
Code **MAGEXP**



RRP:  
**\$54.95**

## Magnipro 4x Led Hand Magnifier

4x Magnification plus LED light.  
Code **MZED12**



RRP:  
**\$54.95**

## Magnipro 3x Led Page Magnifier

3x Magnification plus LED light.  
Code **MZ1815**



RRP:  
**\$54.95**

## Magnipro 10x Led Hand Magnifier

10x Magnification plus LED light.  
Code **MZ1812**

# Imag Executive Reading Glasses

RRP:  
**\$59.99**

Reading Powers: 1.00, 1.50, 2.00, 2.50, 3.00

Code	Colour
<b>IMAG01</b>	Black
<b>IMAG02</b>	Gun Metal
<b>IMAG03</b>	Red
<b>IMAG04</b>	Blue
<b>IMAG05</b>	Silver

Subject to stock availability



## Flip Up Polarised Sunglasses

RRP:  
**\$34.99**

Optica unisex classic shape flip-ups clip onto regular prescription and reading glasses to help improve your vision and absorb 99% of the harmful UVA & UVB light. Lightweight and easy to use. Can be cut to size.



### Flip-Ups Standard

Lens Width: 65mm  
Lens Depth: 56mm  
Bridge Width: 13mm

Code **OFUSS** (Smoke Lens)  
Code **OFUSB** (Brown Lens)



### Flip-Ups Small Rectangle

Lens Width: 55mm  
Lens Depth: 36mm  
Bridge Width: 17mm

Code **OFURS** (Smoke Lens)  
Code **OFURB** (Brown Lens)



### Flip-Ups Small Square

Lens Width: 58mm  
Lens Depth: 45mm  
Bridge Width: 15mm

Code **OFUMS** (Smoke Lens)  
Code **OFUMB** (Brown Lens)

**AVATUDE**  
ENHANCE YOUR DIGITAL LIFE

**BLUE LIGHT  
BLOCKING  
GLASSES**

High quality UV400 and UV420 blue light blocking lenses that reduce the symptoms of digital eyestrain while maintaining colour and clarity. All Avatude frames come with a hard protective case.

DIGITAL EYE STRAIN RELIEF FROM:



### Clifton

Reading Powers: 0.00, 1.00, 1.50, 2.00, 2.50, 3.00  
Lens Width: 58mm, Bridge Width: 17mm,  
Arm Length: 136mm

Code **ST8217**

RRP:  
**\$39.99**



### Delray

Reading Powers: 0.00, 1.00, 1.50, 2.00, 2.50, 3.00  
Lens Width: 51mm Bridge Width: 18mm  
Arm Length: 139mm

Colours 

Code **AVRDO**

RRP:  
**\$39.99**

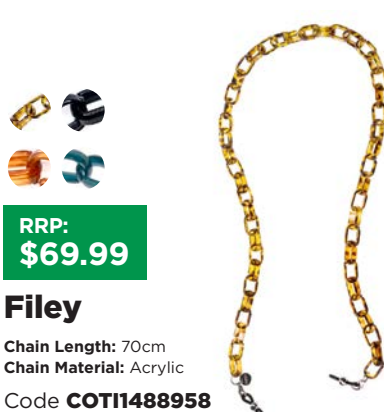
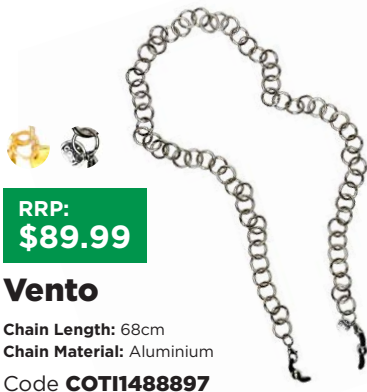


# COTI

Distributed by

## OPTICA®

Transform your eyewear into a glamorous accessory with these beautifully handcrafted Italian chains made from eco-friendly materials. These versatile chains can be worn as glasses chains or simply unclip the silicone ends to wear as a necklace!



# Eye Patches

Our eye patches for kids and young adults are made from soft, hypoallergenic, breathable fabric and foam material that warrants a safe and comfortable snug fit around the eye with prolonged use.

The eyepatch for glasses comes with the same features and fits comfortably under most sizes and styles of spectacles, providing effective occlusion. Using safe fabric materials and water-based inks and dyes.

RRP:  
**\$46.99**

## Childrens Patterned Patch With Elastic Head Band

KAEPCH1J



RRP:  
**\$44.99**

## Childrens Slide-Over Frame Fun Patch

KAKFPCH



RRP:  
**\$46.99**

## Adult Patch With Elastic Head Band

KAEPCH10A



RRP:  
**\$44.99**

## Regular Size Adult Slide-Over Frame Patch

KAAGPCHR10E



# Easy Fix Anytime Anywhere

- ✓ Suitable for all eyewear frames, inc Sunglasses
- ✓ Replace lost and loose screws
- ✓ Fix your Eyewear in seconds
- ✓ Pocket Sized
- ✓ Double ended screwdriver +/-
- ✓ 5 patented SnapIt screws
- ✓ Easy to use in 4 simple steps

RRP \$14.95

### SNAPERK1

OPTICA Eyewear Repair Kit  
SnapIt Screw Prepack (12)



#### Step 1 Choose It

Start with the smallest screw (XS). Work your way up through the sizes to find the best fit for your frames.



#### Step 2 Drop It

into the hole.



#### Step 3 Screw It

down.



#### Step 4 Snap It

off with your fingers.





# Frame Parts

## Nose Pads

Our nose pads are comfortable fitting, non slip. Push-on or screw-in fixing.

Scan the code or visit  
**opticaaccessories.com**  
to see the full range



### Silicone Push-On

50 Pairs per pack

### Silicone Screw-In

50 Pairs per pack

### PVC Push-On

50 Pairs per pack

### PVC Screw-In

50 Pairs per pack

### Polycarbonate Push-On

50 Pairs per pack

### Polycarbonate Screw-In

50 Pairs per pack

### PVC Ultra Slim Screw-In

25 Pairs per pack

### Silicone Self Adhesive

20 Pairs per pack

Available in 4 shapes



Round



Teardrop



D-Shaped



Oval

### PVC Push-On with Metal Insert

25 Pairs per pack

### PVC Screw-In with Metal Insert

25 Pairs per pack



## Nose pad packs



## Saddle Bridges

Our Saddle Bridges are comfortable fitting, non slip. Push-on or screw-in fixing.

### Silicone Push-On

5 Pairs per pack

### Silicone Screw-In

5 Pairs per pack

Available in 3 sizes



Small



Junior



Medium

## Screws

### Hinge Screws

100 Pieces per pack



### Nose Pad Screws

100 Pieces per pack



### Rim Joint Screws

100 Pieces per pack



### Rimless Frame Screws

100 Pieces per pack



### Self Aligning Screws

for Spring Hinges  
100 Pieces per pack



### Self Aligning Screws

for Rayban Frame  
50 Pieces per pack



## Sleeves

### For Rimless Frames

500 Pieces per pack



### Double Sleeves

### For Rimless Frames

50 Pieces per pack



## End Cap

### For Rimless Frames

500 Pieces per pack



## Washers

100 Pieces per pack



## Rimless Nuts

100 Pieces per pack



## Frame Locks

Non-slip temple ends,  
10pc pack





# Tools

From frame adjustments to quick fixes.  
Everything you need, all in one place.



## Tool Stand with Screwdrivers and Pliers

Code **OPT14189**



## Screwdriver Set

Code **OPT14184**



## Optica Screw Extractor

Compact and ergonomic tool to  
eject broken screws.

Code **OPT14137**



## Starter Set

Code **OPT14190**

Compact  
and portable  
essential  
tool set



## 9pc Screwdriver Stand Set

- ✓ Metal Screwdriver set
- ✓ Supplied in solid metal rotating stand.

Code **OPT14238**



## Eyewear Repair Kit by Snapit - 12 Pack

Fix your Eyewear in seconds. ANYTIME /  
ANYWHERE.

Code **SNAPERK1-12PACK**

Scan the code or visit  
**opticaaccessories.com**  
to see the full range



## Tweezer 14mm

Code **OPT14157**



## Optical Lens Protector

Code **OPT14153**



## Sunglass Lens Protector

Code **OPT14154**

# Equipment

Smart equipment solutions to power up your practice. Fast, efficient, and easy to use.



## Digital Ultrasonic Cleaner

1.4 litres. Digital controls with 5 timed wash cycles and auto shut-off. Stainless steel tank with removable plastic basket, watch holder, and lid.

Code **WSCD-4800**



*“Great service & great quality products. Would highly recommend.”*

**Kinga Kozlowski**  
**Windsor Optometry, NSW**



## Binocular Pupilometer

Digital Pupilometer for accurate PD and CVD measurements with easy display and mode switch.

Code **LIPDHX-400**



## Lensometer

Helpful tool for measuring and verifying lens power and accuracy.

Code **OPT14185**



## Multifunction Lens Tester

Multi Tester with long life and low consumption UV LED technology for quickly testing photochromatic, UV, Blue light lenses.

Code **GFA1350**



## Frame Heater

Maga S Frame Heater with heat guard – reliable and safe, featuring a heat concentrator, two heat levels + cold air, and an auto cut-off to prevent overheating.

Code **GFMAGA2-S**

## GFC ZITA Base Frame Heater

Zita Base Frame Heater with heat guard – reliable with heat concentrator and two temperature settings.

Code **GFZITA-B**



# Organising

Organisation made easy. Keep parts together, jobs in order, and your day flowing smoothly.



## Large Job Trays

- ✓ Length 24cm, depth 15cm, height 5cm
- ✓ Stackable
- ✓ Removable insert inside trays
- ✓ Assorted vibrant colours
- ✓ Job tags can be at either end of the tray in the holder
- ✓ Sold in packs on 4pcs.

Code **OPT13877**

Scan the code or visit **opticaaccessories.com** to see the full range



## Eyewear Presentation Tray

Black Presentation Tray with soft velvet liner – a stylish, practical way to display frames and accessories.

Code **OPM7F-01**



Delivering the final touch of luxury in every clients eyewear reveal



## Job Bags

Transparent PE bag for easy visibility and access with zipper closure. Keeps frames, lenses, and file cards organized—ideal for workshop use or external glazing transport. 20 Piece Pack.

Code **OPT13878**

## Price Tags

For almost all frame models. 200 Pieces.



### Large Squared

53mm x 26mm  
(gap 22mm)

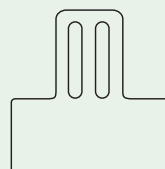
Code **OPT13869**



### Small Oval

57mm x 15mm  
(gap 11mm)

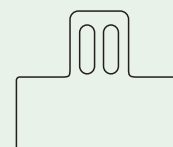
Code **OPT13870**



### Standard 1

37 mm x 17 mm  
(gap 16 mm)

Code **OPT13871**



### Standard 2

36mm x 17mm  
(gap 13mm)

Code **OPT13872**



# Consumables

Small items, big impact. The everyday consumables your practice relies on.

## Adhesive Pads

For Standard Lenses 3M

1 Roll: 1000 Pieces



Size: 31 x 17mm  
Code **OPL14192**



Size: 18mm  
Code **OPL14193**



Size: 26mm  
Code **OPL14194**

## Adhesive Pads

For Hydrophobic Lenses, Red

1 Roll: 500 Pieces



Size: 21 x 14mm  
Code **OPL14202**

## Anti-slip Interface Pads

For super-hydrophobic coated lenses

1 Roll: 500 Pieces



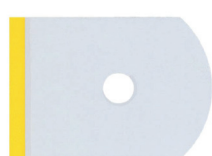
Gold Oval  
Code **OPL14204**



Clear Oval Flexible  
Code **OPL14205**



Clear Oval  
Code **OPL14206**



Clear Rectangle  
Code **OPL14207**

## Loctite

Sizes:  
222 - Red 10ml,  
243 - Blue 10ml  
Code **LOC**



## Ultrasonic Detergent Concentrate

Sizes: 250, 500ml, 5L  
Code **DETNEU**



Visit [opticaaccessories.com](http://opticaaccessories.com)  
to see the full range.

# Testing Equipment



Black 0.6mm  
Code **OPT14208**

Black 0.4mm  
Code **OPT14209**



Red 0.6mm 4 Pack  
Code **OPT14210**

# Occluders

Key diagnostic tools for everyday use. Designed to support comfort, accuracy, and flow



**Occluder  
Hand Held**

Code **LI3013-3**



**Pinhole Hand  
Occluder**

Code **LI3013-4**



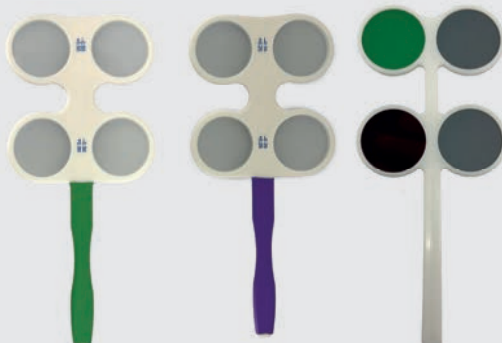
**Lorgnette Pinhole  
Occluder**

Code **OPT14182**

## Confirmation Flippers

Durable flipper with soft handle and all-glass optics—no distortion or yellowing. Available in  $\pm 0.25$  to  $\pm 4.00$  D, with powers marked on the handle.

Code **GL127**



## Stick-on Prism Foil

For strabismus treatment, best optical quality, elastic flexibility, excellent adhesion.

Code **OPP1421**



**Childrens Occluding  
Glasses**

Code **KAGLSJ**



**Regular Occluding  
Glasses**

Code **KAGLSR**



**Large Occluding  
Glasses**

Code **KAGLSL**

# Testing Equipment



**Universal Trial Frame**

Lightweight structure, suitable for all standard 38mm lenses.

Code **LIUTF5080-1002**



**Universal Pro Trial  
Frame**

Lightweight structure, suitable for all standard 38mm lenses.

Code **LIUTF5080-PRO**



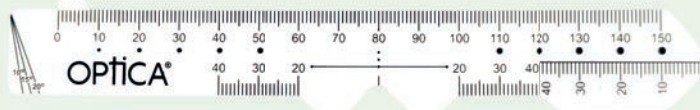
**Trial Clip**

Attaches securely to patient's glasses. Lightweight and portable.

Code **OPT14186**

# Measuring Tools

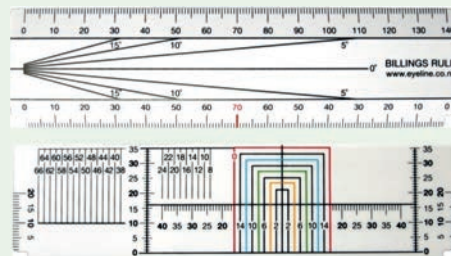
Accurate measurement made simple with our range of gauges, rulers, and eye charts.



## PD Ruler

Clear flexible acetate. Transparent, made of polycarbonate, measuring range: 0-160 mm (mm graduation) with holes for measuring thread diameters. 3 Pack.

Code **OPT14156**



## Billings Optical PD Rule

Includes User Guide. Accurately measures spectacle frames, PDs, and other essential fitting calculations for modern optical practices, labs, and workshops.

Code **EYBILL**

## Bott Wand

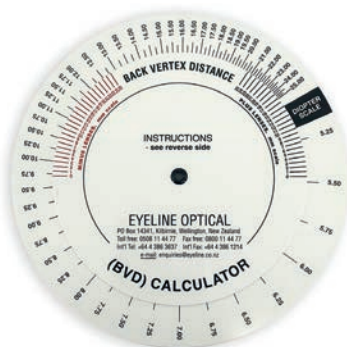
Bott Confrontation Field Target Mk.II. Designed for field assessment by confrontation, this device features a comfortable aluminum handle and a long black wand with a side-mounted flashing LED for false-positive testing. Powered by two AA batteries.

Code **BOTTW2**



## Segheight Gauge

Code **OPT14155**



## Back Vertex Distance Calculator

The Eyeline Back Vertex Distance (BVD) Gauge is an accurate low-cost device for measuring the distance between the back of a lens to the cornea in mm.

Code **EYOBVDDC**

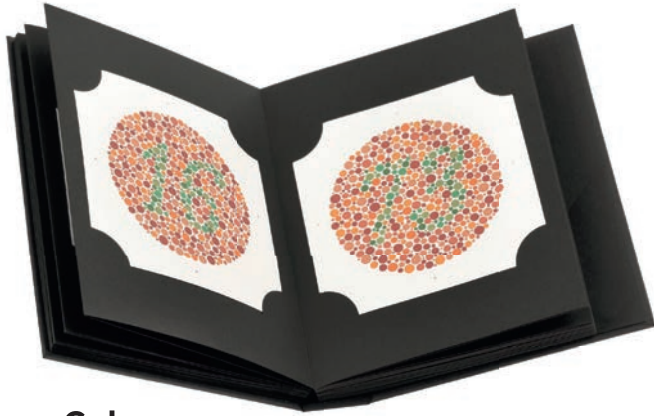


## Back Vertex Distance Caliper

The Eyeline Back Vertex Distance (BVD) Gauge is an accurate low-cost device for measuring the distance between the back of a lens to the cornea in mm.

Code **EYOBVDG**





## Ishihara Colour Test Books

Code **ISHI24** 24 Plate

Code **ISHI38** 38 Plate



## Protractor

Code **OPT14183**



## Hamilton-Veale Telco 10 Wire Colour Test

Code **EYOTELCO**



## Hamilton Veale Contrast Sensitivity Test

Code **EYHVCSC**



## Churchward -Snellen Test Wall Chart - DA

3 metres. Code **EYTT3DA**

4 metres. Code **EYTT4DA**

6 metres. Code **EYTT6DA**



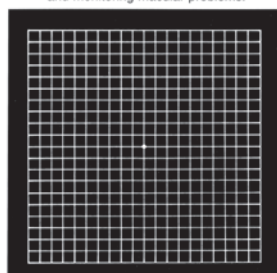
## Near Reading Card

with N5 at Bottom, laminated.  
303 x 185mm

Code **EYRCN5B**

## GENERAL INSTRUCTION

A take-home ARD-AMSLER chart for testing and monitoring macular problems.



1. Hold card approximately 300 mm (12 inches) from the eye - (Wear your reading glasses to help you focus).
2. Test right eye first by covering the left eye with your hand.
3. Look (stare) at centre white dot.
4. If you notice any waves, distortions or blind spots in the lines contact your Eye Specialist or Optometrist as soon as possible.
5. Repeat for left eye.

This chart was given to you on: \_\_\_\_\_ by: \_\_\_\_\_  
Practice Stamp

## Amsler Test Pad

A take-home ARMD Test- AMSLER chart for testing and monitoring macular problems. 50 Pages.

A5 210 x 148mm

Code **EYOAMSPAD**



## Churchward -Snellen Test Wall Chart - DA

4 metres. Code **EYKINDI4**

6 metres. Code **EYKINDI6**

Key Card. Code **EYKINDIKEY**

See the full range at  
**opticaaccessories.com**

# Custom-Branded Optical Accessories

## LOGO LUXE

- ✓ Cases
- ✓ Lens Cleaning Spray
- ✓ Microfibre Cloth

See pages 6-9



*"Great service & great quality products. Would highly recommend."*

**Kinga Kozlowski  
Windsor Optometry,  
NSW**

## PICTURE PERFECT

Turn your favourite image into a powerful branding tool.



- ✓ Cases
- ✓ Lens Cleaning Spray
- ✓ Microfibre Cloth

See pages 10-13

## BESPOKE BRANDED

Put your brand front and centre with the Bespoke Branded range.



- ✓ Cases
- ✓ Lens Cleaning Spray
- ✓ Microfibre Cloth

See pages 14-17

# OPTICA®

For our full range of Optica Accessories visit  
**[www.opticaaccessories.com](http://www.opticaaccessories.com)**

**Optica Life Accessories Limited**  
52a Hayton Road, Wigram, Christchurch 8042

AU: 1800 199 860 NZ: 0508 96 33 33  
[service@opticaaccessories.com](mailto:service@opticaaccessories.com)

## Quality Service Trust Experience

**Sedex** Member

**APCO**  
AUSTRALIAN PACKAGING  
COVENANT ORGANISATION  
MEMBER