

Test Room Catalogue

OPTICA®

www.opticaaccessories.com

OPTICA®

- 1 Home Visits**
- 2 Press-ons**
- 3 Visual Training**
- 4 Diagnostics**
- 5 Trial Frames and Lenses**
- 6 Eye Patches**
- 7 Colour Tests**
- 8 Eye Charts**
- 9 Equipment**



1 Home Visits

Eye Health Kit

SKU: ECKIT01

The OPTICA Eye Health Kit contains 8 different eye tests, perfect for new practice room set ups or home visits.

Kit includes:

- Near Vision Reading Card
- Combined Illiteracy Symbols, LogMAR Near Vision Card
- Colour Deficiency Chart
- Illiterate "E" 3 metre Snellen Notation Chart
- Portable Comprehensive Eye Test Card Containing:
 - 3 Metre Distance Chart
 - Amsler Grid Eye Chart
 - Rose Blackbirds LogMAR Near Vision Test
 - Periperal Vision Test



2 Press-ons

Stick-on Prism Foil

SKU: BS12008

The advantage of press-on prisms:

Practical, lightweight, wide power range. Thin and flexible and easy to fix to existing lenses - held by static adhesion, easily removed. Low cost and low risk treatment during power changes and vision therapy.

- Usable diameter: 66 mm
- Storing period: max. 1 Year
- Marking of foils only with tallow or wax pencils

For strabismus treatment, best optical quality, elastic flexibility, excellent adhesion.

Many diopters available ranging from 1 - 40D



Press-on Kit

SKU: CS08139

To install stick-on prism foil.

Kit consisting of:

- Fine Tip Marker
- Scissor for shaping
- Protractor to apply Press-on with oblique base
- Tray



Bangerter Occlusion Foil

- Visus: 0.0
- 10 individual foils can be cut from one 215 x 105mm foil in order to equip 10 children's spectacles
- The foils can be cut using scissors
- Larger surfaces can also be covered for special applications

Measurement: 215 x 105mm:

SKUS:

- BS1200851** - Full Occlusion Beige
- BS1200852** - 0.1
- BS1200853** - 0.2
- BS1200854** - 0.3
- BS1200855** - 0.4
- BS1200856** - 0.6
- BS1200857** - <0.1
- BS1200858** - 0.8
- BS1200859** - Light Perception
- BS1200860** - Full Occlusion Grey
- BS1200861** - Full Occlusion Blue/Grey



Measurement: 60 x 60mm:

SKUS:

- BS1200863** - Full Occlusion
- BS1200864** - 0.1
- BS1200865** - 0.2
- BS1200866** - 0.3
- BS1200867** - 0.4
- BS1200868** - 0.6
- BS1200869** - <0.1
- BS1200870** - 0.8
- BS1200871** - Light Perception
- BS1200872** - 1.0
- BS1200873** - Full Occlusion Ladybug Design
- BS1200875** - Full Occlusion Clown Design
- BS1200876** - Full Occlusion Butterfly Design



3 Visual Training

Brock String

SKU: GL603

The Brock String with coloured beads is used for physiological diplopia training. Used for jump vergences and other anomalies of binocular vision.

SKUS:

- GL603200** - Brock String, 10ft long with 3 beads
- GL603300** - Brock String, 12ft long with 5 beads
- GL603400** - Brock String, 6ft long with 5 beads



Adult Fixation Stick Budgie

SKU: GL458500

A popular fixation stick with a budgie figure, a British Bobby figure, Tumbling E, and letter optotypes plus a short, continuous reading paragraph.

Dimensions: 17 cm x 1.5 cm

Other Fixation Sticks available on request



4 Diagnostics

Confirmation Flippers

SKU: GL127

With a durable soft handle, this flipper is made with ALL GLASS OPTICS - no distortions or yellowing. Available from -/+ 0.25 to 4.00 diopters.

The powers are listed on the handle.

Well balanced and comfortable to use.



Reversing Red/Green Flippers

SKU: GL494300

A flipper with red/green lenses on top and green/red lenses on the bottom.

This flipper is used with vectographs and tranaglyphs to reverse the image to convex and concave.



Prism Flipper

SKU: GL13700

Individual hand-held prism flippers. The orientation of these flippers is in base-in and base-out.

Lens types are:

- 1 Diopter ($1^{\wedge}+1^{\wedge}$) = 2^{\wedge} total
- 2 Diopter ($2^{\wedge}+2^{\wedge}$) = 4^{\wedge} total
- 3 Diopter ($3^{\wedge}+3^{\wedge}$) = 6^{\wedge} total
- 4 Diopter ($4^{\wedge}+4^{\wedge}$) = 8^{\wedge} total
- 6 Diopter ($6^{\wedge}+6^{\wedge}$) = 12^{\wedge} total
- 8 Diopter ($8^{\wedge}+8^{\wedge}$) = 16^{\wedge} total



The Fly Stereo Test

SKU: VI1000S

The Fly Stereo Acuity Test with Geometrical Symbols + instructions.

Includes:

- Manual and both Pediatric & Standard Polarized Viewers.
- Rapid test for amblyopia & strabismus using gross thru fine stereopsis.
- Traditional Fly image for testing gross stereopsis (4800 seconds of arc).
- Graded Circle Test from 400 seconds down to 20 seconds of arc.
- Shapes for testing children at 400, 200 & 100 seconds of arc.
- New technology eliminates monocular clues.
- Answer Key on back cover.



Gem Polarized Variable Vectograph

SKU: VI1060PL

The Gem PL Polarized Variable Vectograph for vision training is for improving the vision therapy outcomes from your patients using the new home reinforcement Vision Therapy System.

Includes:

- Manual and Standard Polarized Viewers



Random Dot “E” Stereo Depth Perception Test

SKU: STSO-003

The Random Dot “E” Stereotest is designed specifically for use with children as young as three years of age and up. The patient is asked to distinguish between a “raised E” and a non-stereo target. Figures cannot be identified without the viewing glasses to discourage guessing.

Rapid test for amblyopia & strabismus in early & non-readers and non-verbal children & adults. Basic Screening (Pass/Fail), 3 Cards (E Target, Demo & Blank), new technology eliminates monocular clues.

Includes:

- Manual and Standard Polarized Viewers



Balloon Polarized Variable Vectograph

SKU: VI1052

The Balloon Polarized Variable Vectograph offers a three-dimensional picture used to strengthen the binocular system and provide base-in and/or base-out vision training. Different objects in the vectograph are at varying depth levels (degrees of arc) and image orientation.

Includes:

- Manual and Standard Polarized Viewers



Amsler Test Pad

SKU: EYOAMSPAD

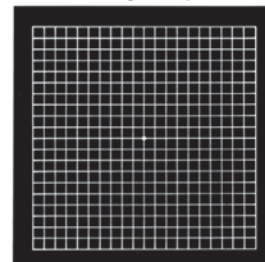
A take-home ARMD Test- AMSLER chart for testing and monitoring macular problems. The practitioner takes a page off the pad and gives it to the patient to take away for monitoring at home. Printed on pad leaf.

Area on pad leaf for the Practice Stamp, date and the name of the practitioner.

Includes:

- 50 Pages per pad

GENERAL INSTRUCTION
A take-home ARD-AMSLER chart for testing and monitoring macular problems.



1. Hold card approximately 300 mm (12 inches) from the eye - (Wear your reading glasses to help you focus).
2. Test right eye first by covering the left eye with your hand.
3. Look (stare) at centre white dot.
4. If you notice any waves, distortions or blind spots in the lines contact your Eye Specialist or Ophthalmologist as soon as possible.
5. Repeat for left eye.

This chart was given to you on _____ by _____
Practice Stamp

5 Trial Frames

Universal Trial Frame

SKU: LIUTF5080-1002

Lightweight structure, suitable for all standard 38mm lenses.

Product details:

- PD Scale: 50mm-80mm
- Weight: 61g
- Knobs fastened with screws
- Back lens holders of round corners
- Easily-shaped ear rests
- For 5 measuring glasses at each side



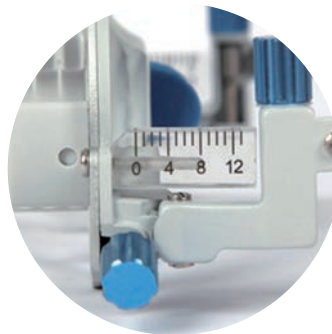
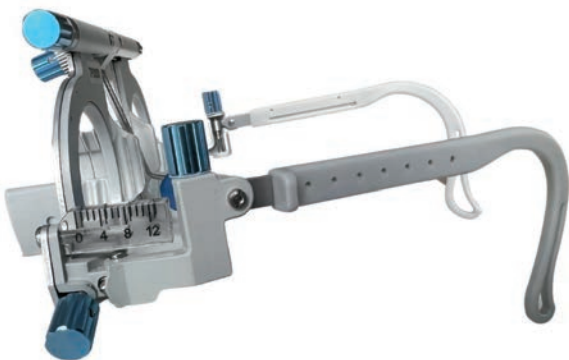
Universal Pro Trial Frame

SKU: LIUTF5080-PRO

Lightweight structure, suitable for all standard 38mm lenses.

Product details:

- Binocular interpupillary distance: 50-80mm
- Monocular interpupillary distance: 25-40mm
- Minimum Scale: 1mm
- Total distance of interpupillary distance: 1mm
- Tolerance of interpupillary distance value: +/-0.5mm
- Dial scale of axis: Left Dial: 130-1-140°. Right Dial: 40-180-50°.
- Inner diameter of holder: 33.5mm
- For 5 measuring glasses at each side
- Rotating angle of lenses: 360°
- Adjustable range of nose rest: Height: 0-23mm. Angle: 0-360°
- Weight: 55g



Children's Trial Frames

SKU: CS15731 Blue

SKU: CS15730 Pink

0-3 Years - For optometrical refractions - Tabo System

The design of the frame and its hypoallergenic material have been manufactured to offer the best possible visual comfort during eye examination. The wrap-around temples give a good fit to the child's face and the certified frame is safe in case a child chews it.

The bridge is centred and splayed, thereby helping to maintain the optical centres. Determination of the astigmatism axis is according to the TABO system.

Product details:

- PD Scale: 50mm
- Weight: 16g
- 3 lens holders suitable for standard 38mm trial set lenses
- Wrap-around temples and adjustable silicone tube
- Frame without any metal parts
- Eye size: 34. Bridge Width 15mm. Temple Length 110mm

* Lenses not included



Children's Trial Frames Set

SKU: CS08215

Display Box with 4 children's trial frames.

Product details:

- PD Range: 50-52-54-56mm
- Lightweight, non-allergic structure
- 4 lens holders suitable for standard 38mm trial set lenses: 3 external rotating and 1 fixed internal
- Standard axis rotation
- Comfort Bridge
- Flex temples, length adjustable from 90 to 130mm
- Manual lens axis rotation, scale in 5° increments

* Lenses not included



Trial Lens with Metal Rim

SKU: BS12047

Suitable for standard trial frames with 38mm lenses. With AR-coating

Product details:

- Cylinder and Spheric Lenses available



6 Eye Patches



Slide-over Frame Fun Patch for Children

SKU: KAKFPCHGE - Girls design*

SKU: KAKFPCHBE - Boys design*

*Designs subject to availability



Fun Patches are reusable, fabric occlusion patches to treat amblyopia. The patches fit comfortably and snugly under most sizes and styles of spectacles to provide effective occlusion.

Product details:

- Each patch measures approximately 11.8cm by 6cm



Slide-over Frame Patch for Adults

SKU: KAAGPCHR10E

*Colours are subject to availability

Our Adult Glasses Patches are plain and discreetly coloured and suitable for all spectacle frames, with or without separate nose pieces. They are made from layers of foam and breathable and washable fabric which is certified safe to use against the skin.



Product details:

- Each patch measures approximately 13cm by 6cm



Junior Eye Patch with Elastic Head Band

SKU: KAEPCH1J

*Designs subject to availability

The patches are suitable for the right or left eye and held in place with quality elastic that makes them comfortable to wear for long periods. Unlike other eye patches that have a cardboard stiffener, our Junior Eye Patches are made from layers of material that is safe, breathable and washable and certified safe to use against skin to ensure a soft and snug fit around the eye.

Product details:

- Each patch measures approximately 7cm by 5.5cm



Adult Eye Patch with Elastic Head Band

SKU: KAEPCH10A - Regular

SKU: KAEPCH10ASM - Small

*Colours are subject to availability

The patch is held comfortably with 7mm wide quality elastic. The elastic is 40cm long and easily stretches to twice its length. It is also latex-free. The patch has a black lining and will exclude most light, but total light exclusion cannot be guaranteed. When worn, they should entirely cover the eye and socket. The stiffened-fabric core keeps its shape after washing, unlike most eye patches that have cardboard stiffening.

Product details:

- Regular patch measures approximately 7.7cm x 6.7cm
- Small patch measures approximately 7.0cm x 5.4cm



Regular Black Eye Patch with Elastic Retainer

SKU: GL473500 - Adults size

SKU: BCSF3ES - Childrens Size

These soft Patches are comfortable to wear! Patches are cupped to avoid contact with eye lashes and have an edge band around the rim making them easier to wear and resistant to fraying.

Product details:

- Comes with a wide elastic strap
- Adults patch measures 8cm x 6cm
- Childrens patch measures 6.3cm by 5cm



Black Medical Eye Shield (Plastic) with Elastic Retainer

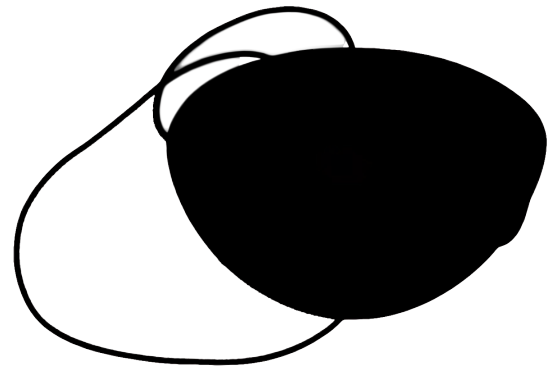
SKU: GL131000 - Adults size

SKU: GL571600 - Childrens size

These plastic shields provide temporary protection for the eye and come with elastic strings.

Product details:

- Childrens eye shield measures 6.3cm x 4.4cm
- Adults eye shield measures 7.7cm x 5.3cm



7 Colour Test

Colour Deficiency Test

SKU: OPCDTEST1

Designed by experts in vision science, this comprehensive test evaluates your ability to discern various shades and hues accurately. Whether you're curious about your color vision or suspect you may have a deficiency, our test provides insightful results in just minutes.



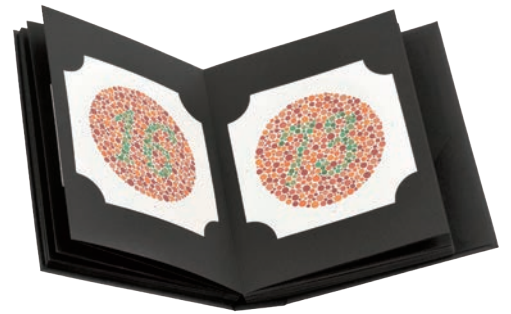
Ishihara 24 Plate Colour Test Book

SKU: ISHI24

38 version also available on request

The Ishihara test is a colour perception test for red-green colour deficiencies, the first in a class of successful colour vision tests called pseudo-isochromatic plates ("PIP").

The 24 plate edition is the one used by most optometric professionals as it tests the full-colour range required by land, sea and air transport authorities.



Hamilton-Veale Telco 10 Wire Colour Test

SKU: EYOTELCO

Developed by John Veale, New Zealand Optometrist, this simple and practical colour screening test is very effective in colour deficiency assessment. It is ideal for children (they don't have to know the name of the colours), handicap, and illiterate people where English may not be their first language. It is a lot of fun for them and occasionally a little challenging.

8 Eye Charts

Near Reading Card

SKU: EYRCN5B

with N5 at Bottom, laminated

SKU: EYRCN5T

with N5 at Top, laminated

Size: 303 x 185mm

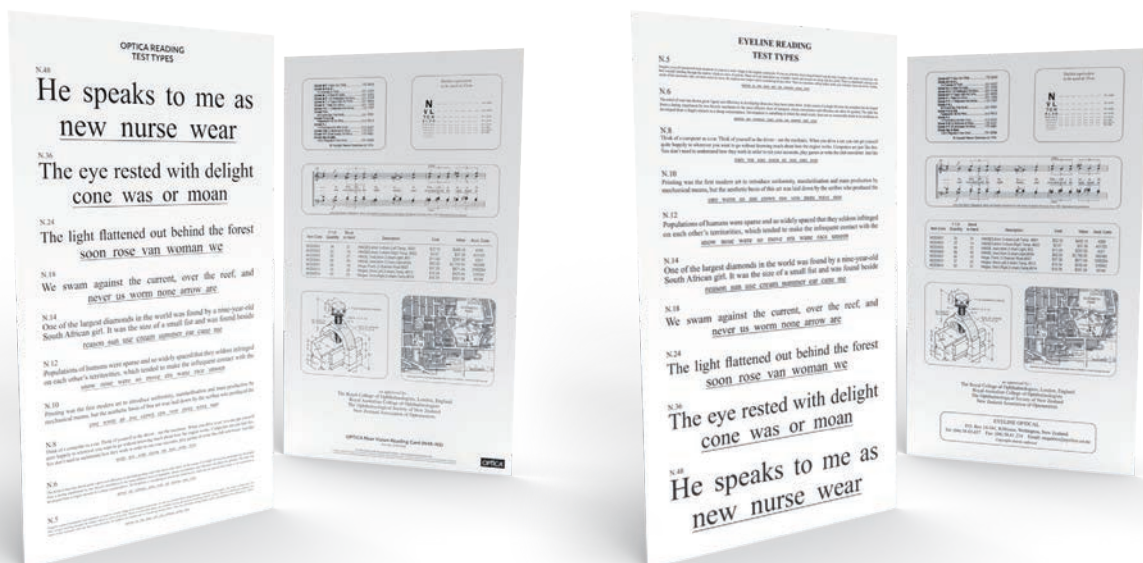
The card is laminated and non-reflective card for surface protection. The text used is interesting and in a modern prose form. It is not designed to test reading skill but rather to present an easy and neutral clinical test in accordance with the recommendation of the Faculty of Ophthalmologists, London. The isolated test words will suit a wide range of patients with different reading abilities - including children.

Letter sizes on one side:

N5, N6, N8, N10, N12, N14, N18, N24, N26, N48

The reverse side of the card are examples of:

- A part of a page from The Telephone Book
- Reduced Snellen equivalent
- Line of music score
- Computer worksheet
- Technical Drawing
- Street Map



EYRCN5B

EYRCN5T

Vocational Test Book

SKU: EYVTTB

Vocational, Occupational and Recreational Tests

This Vocational test type book includes the standard near test type text sizes from N.48 down to N.4. The N.5 and N.4 lines are not part of the standard but are included as some professionals find it beneficial to have them. These tests should not be used to test a person's reading ability or as an English test.

The tests represent a selection of vocational, occupational and recreational pursuits. The tests include text from a telephone book, illustrated engineering catalogue, a hand of playing cards, technical drawings, a street map, part of a choristers music score, a page from a dictionary, a sample of Pitman shorthand, an airline timetable, a shop docket and a computer generated price list.

There is also a specific test to meet the Certification Board qualifications for Inspection Personnel (CBIP) J.1 requirements. Also included is a test to meet the AS2177, Pt. 2, Clause 2.3.1 Standard of 0.50 mm sizing (see image 6).

Standard Type Sizes are:

N.4, N.5, N.6, N.8, N.10, N.12, N.14, N.18, N.24, N.36 and N.48.



Churchward-Snellen Test Wall Chart – DA

3 metres - SKU: EYTT3DA

4 metres - SKU: EYTT4DA

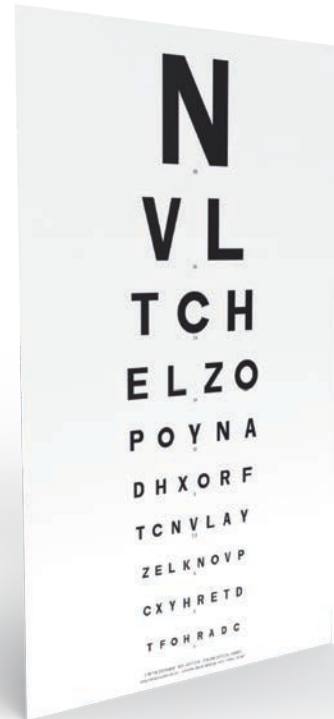
6 metres - SKU: EYTT6DA

Standard Snellen notation for acuity test used by optometrists, ophthalmologists, medical doctors and occupation health personnel for sights tests including aviation, marine, police and defence certification.

Made from semi-rigid, non-reflective, white plastic sheet with non-reflective black letters. Each chart comes with a set-up kit.

Letter sizes:

60/6, 36/6, 24/6, 18/6, 12/6, 9/6, 7.5/6, 6/6, 5/6. The letter size is printed under each line. The “DA” charts have an extra 6/6 line. The additional line provides a further check for patients that may have memorised the standard Snellen charts



Churchward-Snellen Test Wall Chart – DX

3 metres - SKU: EYTT3DX

4 metres - SKU: EYTT4DX

6 metres - SKU: EYTT6DX

Standard Snellen notation for acuity test used by optometrists, ophthalmologists, medical doctors and occupation health personnel for sights tests including aviation, marine, police and defence certification.

Made from semi-rigid, non-reflective, white plastic sheet with non-reflective black letters. Each chart comes with a set-up kit.

Letter sizes:

60/6, 36/6, 24/6, 18/6, 12/6, 9/6, 7.5/6, 6/6, 5/6. The letter size is printed under each line. The “DX” charts have one 6/6 line.



Churchward-Snellen Test

Plastic panel for lightbox

3 metres - SKU: EYTTL4DX

6 metres - SKU: EYTTL6DX

6 metres Indirect - SKU: EYTTL6DXI

Standard Snellen notation for acuity test used by optometrists, ophthalmologists, medical doctors and occupational health personnel for sights tests including aviation, marine, police and defence certification.

The indirect panel is identical to the above 6-metre chart except letters printed in reverse (indirect) for viewing via a mirror. This indirect version is only available in the 6-metre configuration.

Made from 2mm Opal white acrylic plastic sheet.



3M Distance Chart

English/Te Reo Alphabet

SKU: EYTTRM3M

Size: 3 metres - 260 x 100mm

Standard Snellen notation for acuity test used by optometrists, ophthalmologists, medical doctors and occupation health personnel for sights tests including aviation, marine, police and defence certification.

Made from semi-rigid, non-reflective, white plastic sheet with non-reflective black letters. Each chart comes with a set-up kit.

Letter sizes:

60/6, 36/6, 24/6, 18/6, 12/6, 9/6, 7.5/6, 6/6, 5/6. The letter size is printed under each line. The "DX" charts have one 6/6 line.

This chart is available for test at a 3 metre distance from patient.



Illiterate “E” Wall Chart

3 metres - SKU: EYTTC3DE

4 metres - SKU: EYTTC4DE

6 metres - SKU: EYTTC6DE

This sight testing chart conforms to the Snellen notation for 6, 4 and 3 metres. It can be used directly or indirectly (i.e. using a mirror).

The illiterate “E” also known as the “tumbling E” for testing visual acuity of people who are illiterate, handicapped or where English is not their first language or for persons who cannot speak.

It can be used in conjunction with a card with an E marked on it that the patient holds and rotates to indicate the direction the fingers of the E are pointing.

Alternatively, the fingers of the hand can be used to indicate the direction the E fingers are pointing to.

Each line is numbered for easy referral.

Made from semi-rigid, non-reflective white plastic sheet with non-reflective black letters. Each chart comes with a set-up kit.

Letter sizes:

60/6, 36/6, 24/6, 18/6, 12/6, 9/6, 7.5/6, 6/6, 5/6.

The letter size is printed under each line.



Vision Hearing Technicians Chart

SKU: EYTDDAVISL

The New Davis Chart

Approved test type chart for Vision and Hearing Technicians (VHT)

Approved by Ministry of Health and RANSCO

String holes to hang on a wall

Non-reflective letters and card

Laminated and double-sided to reduce memorising

Goes with the VHT handheld occlude (EYMOB)



Hamilton Veale Contrast Sensitivity Test

SKU: EYHVCSC

We are all familiar with visual acuity. This measures a visual threshold by keeping the contrast of an object high and constant, whilst varying the spatial separation. An alternative method to measure a visual threshold is to use a contrast sensitivity test, which varies contrast than spatial separation.

The visual acuity of a patient may be normal, but there may be a lowered contrast sensitivity function at low and intermediate spatial frequencies.

The Hamilton-Veale Contrast Sensitivity test can be used to monitor a decrease in the contrast sensitivity function over time. Often, even though a patient is provided with the best possible refraction, they complain they are not seeing clearly. This test can be used to reiterate the need for more task lighting when reading or performing close tasks. Elderly will often comment on the difficulty seeing in poor light or at night. The test may explain this difficulty, due to a loss of contrast sensitivity function.

Rule of thumb for using the test:

Those that can not see to:

Level 4: Suffer from severe loss or are blind

Level 5 to 8: Suffer from significant loss and need contrast enhancement.

Level 9 to 12: Have a noticeable loss and need lighting evaluation.

Level 13 to 16: Have a near normal to normal contrast sensitivity function.



Childrens Churchward-Snellen Test Wall Chart

4 metres - SKU: EYKINDI4

6 metres - SKU: EYKINDI6

Key Card - SKU: EYKINDIKEY

Childrens Churchward-Snellen 4 & 6 Metre Distance Test Wall Chart is designed for young children who cannot yet identify all the letters of the alphabet. The key card is placed in front of the patient and is asked to point or touch the figure on the key card that resembles the figure the examiner is pointing to.

Each chart comes with a key card.

Made from semi-rigid, non-reflective, white plastic sheet with non-reflective black letters. Each chart comes with a set-up kit.



LEA Four Symbol Near Card

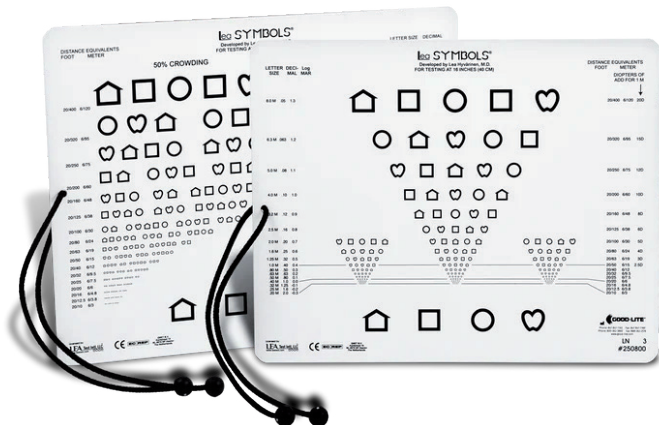
SKU: GL250800

Size: 203 x 354mm

This test assesses the functional vision of a child at near distances and can also be used to familiarize a child with the testing procedure before introducing a distance test.

Features proportionally spaced (logMAR) lines on one side and more tightly-spaced symbols on the opposite side. Line sizes range from 20/400 to 20/10 (6/120 to 6/3) equivalent, 0.05 to 2.00. A response key is printed on both sides of the chart. Flashcards and instructions are included.

Testing distance: 400mm



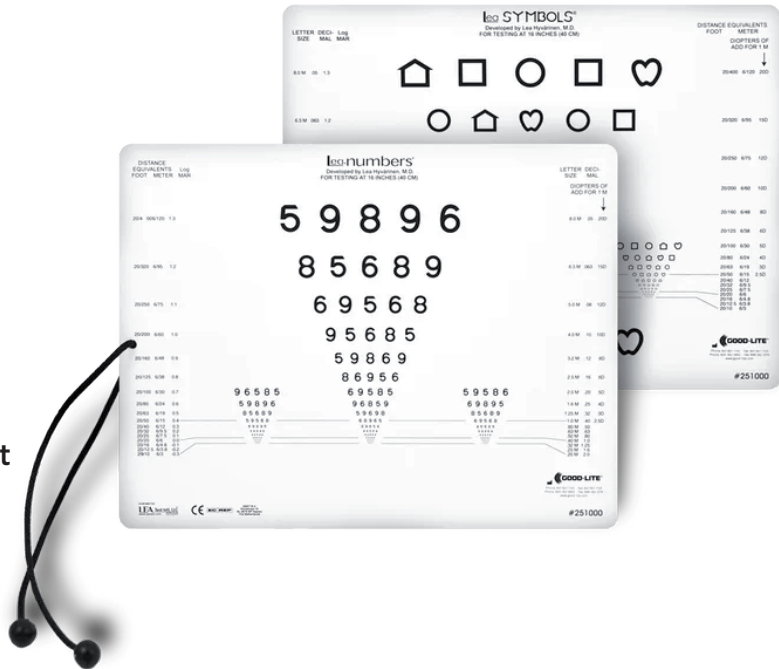
LEA Symbols & LEA Numbers Near Card

SKU: GL251000

Size: 203 x 354mm

This card combines a LEA SYMBOLS® line test on one side and a LEA NUMBERS® line test on the opposite side. Features proportionally-spaced lines from sizes 20/400 to 20/10 (6/120 to 6/3) equivalent. The attached 16" (40cm) cord ensures proper assessment distance to get the most effective results for the patient. A LEA SYMBOLS® response key is printed on the test card. Flashcards and instructions included.

Testing distance: 400mm



Howell Phoria Cards

Near Card at 33cm - SKU: CYPHORN

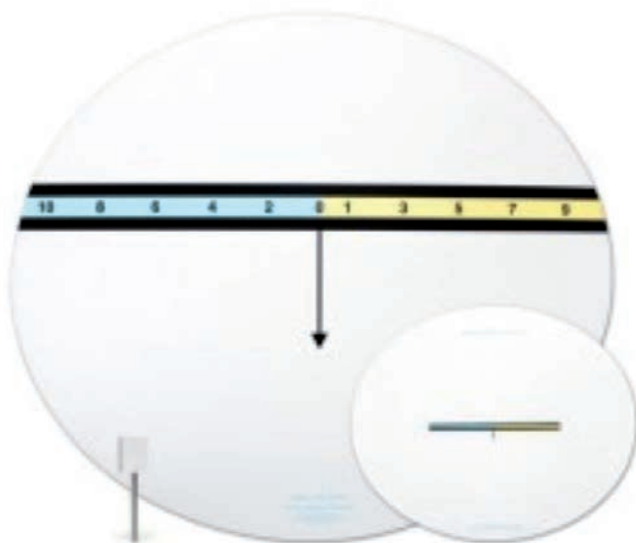
Distant Card at 3 metres - SKU: CYPHORD

Set - SKU: CYPHORSET

These cards allow direct measurement of the distance and near phorias in real space or with a phoropter. The patient simply has to tell which number the arrow points to. Any odd number (in yellow) shows esophoria while the even numbers (in blue) shows exophoria. An AC/A can quickly be determined with trial lenses.

Near card is about 12" wide.

Distance chart is about 24" wide.



9 Equipment

Binocular Pupilometer

SKU: LIPDHX-400

Pupilometer with digital display for simple and precise measurement of the pupil distance.

- Switch to select between monocular & binocular measurement
- Illuminated focal point ensures easy reading from the corneal reflection
- Large, easily readable LC display with simultaneous display of total and individual PD
- Switch to select between PD measurement & CVD measurement
- Enlargement switch for spectacle wearer
- Measurement range: 45-82mm (0.5mm increments)
- Viewing distance: From 30cm to infinity
- Power off: Automatically after 1 minute without use



Frame Heater

SKU: GFMAGA2-S

The Maga S Frame Heater, with heat guard - One of the most reliable frame heaters on the market.

Comes with heat concentrator, two temperature levels + cold air to prevent burning the frame.

Features:

- Dual air flow to cover both sides of frame
- Two temperature levels (70-90c/130-170c)
- Up to 180c with heat concentrator
- Cold air
- Safety cut-out switch to prevent overheating
- 220V AC
- Dimensions: 315 x 190 x 215mm
- Weight: 2.60kg



Bott Wand

Bott Confrontation Field Target Mk.II

SKU: BOTTW2

The Bott confrontation field target was designed by New Zealand Optometrist Alan Bott, who recognised the need for a small reliable, low-cost target to assess the visual fields of patients.

It has been well documented that a flashing light of known intensity and size is a suitable target for visual field testing. The purpose of this device is to provide a suitable target when assessing fields by confrontation.

The quality aluminium handle fits comfortably into the hand. Two AA-size batteries power the Wand. The handle supports a long black wand which contains the flashing LED light. The light is fitted into the side of the wand which allows it to be easily turned away from the subject to allow for false-positive tests.

Should the examiner feel that the subject either does not understand or is commenting when they see something other than the light, then the wand can be rotated through 180° which will prevent the light from being seen by the subject. If the examiner still gets a response, they will know it is a false positive and will need to re-instruct and re-test the subject.

Approved by NZ Land Transport Authority for assessing peripheral fields by confrontation.

Batteries not included.



OPTICA[®]

**Quality
Service
Trust
Experience**

For our full range of Optica Accessories visit
www.opticaaccessories.com

Optica Life Accessories Limited
8 Moncur Place, Addington, Christchurch 8024

AU: **1800 199 860** NZ: **0508 96 33 33**
orders@opticaaccessories.com

Sedex  Member

Enabling responsible supply chains.

Optica Life Accessories Limited is a member of Sedex (www.sedexglobal.com). Sedex is a platform used by more than 38,000 members in over 150 countries to manage performance around labour rights, health & safety, the environment and business ethics.

Being a member of Sedex is a sign of Optica Life Accessories Limited's willingness to share information and to utilise this information to help manage and improve ethical standards within the supply chain.

APCO 
AUSTRALIAN PACKAGING
COVENANT ORGANISATION
MEMBER